

**HS** 河北韩杉新型装饰材料有限公司  
Hebei Hanshan New Decoration Material Co., Ltd.

国内网址 (Domestic website) : [www.韩杉.com](http://www.韩杉.com)

国外网址 (Foreign website) : [www.spcfloormanufacture.com](http://www.spcfloormanufacture.com)

国内联系方式 (Domestic contact information) : 0086-137 0321 9573

国外联系方式 (Foreign contact information) : 0086-133 9323 7419

邮箱 (Email) : [cc@hsdb168.com](mailto:cc@hsdb168.com) [hs@hanshanfloor.com](mailto:hs@hanshanfloor.com)

公众号  
(official account)



**SPC FLOORING**  
**高端防水锁扣地板**  
HIGH-END WATERPROOF SPC CLICK FLOORING

零醛智造 科技环保

Formaldehy free Germany technology Environment friendly

**HS** 河北韩杉新型装饰材料有限公司  
HEBEI HANSHAN NEW DECORATION MATERIAL CO., LTD





**CONTENTS** **目录**

公司资质/荣誉 Company qualification / honor	03
公司简介 Company profile	04
韩杉地板技术参数 Technical data of Hanshan SPC floor	05
SPC地板产品结构 Struture of SPC floor	06
木纹系列 Wood grain series	07
石纹系列 Stone series	18
毯纹系列 Blanket series	21
SPC地板与传统地面材料优劣对比 Comparision of advantages and disadvantages of SPC flooring and traditional flooring	23
SPC地板产品优势 Comparison of SPC flooring made of virgin raw material,recycled material and mixtured material	24
环保/质量检测报告 Formaldehyde test report	25
防火检测报告 Fire detection report	27
SPC地板产品优势 The advantage of Hanshan SPC flooring	28
SPC地板制作流程 SPC floor production process	31
韩杉SPC地板16大技术专利 Hanshan SPC floor sixteen technology patents	32
SPC地板工程案例 SPC floor engineering case	33
SPC地板销售网络 SPC floor sales network	37
SPC地板安装步骤 SPC floor installation steps	38



## COMPANY QUALIFICATION / HONOR

公司资质/荣誉



## COMPANY PROFILE

公司简介

河北韩杉新型装饰材料有限公司成立于 2015 年, 位于河北历史文化名城——正定县, 是一家集生产、研发、销售 SPC 地板的企业, 是国内首批做 SPC 地板的企业之一。

韩杉地板已经逐步实现设计、生产、行销的国际化运作。企业先后获得多项实用新型专利, 荣获河北省“质量信得过产品”, “重点推荐产品”, “质量跟踪产品”, “质量、服务、信誉 AAA 级企业”, “全国重点推荐诚信经营示范单位”。

韩杉地板遵循产品第一、服务至上的理念, 产品严格按照国家标准生产制造, 先后通过 GB/T19001-2016/ISO9001: 2015 质量管理体系证书, CE 认证, FLOORSCORE 认证。凭借精湛的技术、尖端的生产设备、先进的服务理念、国际化的发展步伐立志打造国内地板研发生产、市场营销、品牌领先的知名企业。

2019 年底韩杉引进新的德国生产设备, 遵循地墙一体化的国际先进理念, 打造出极具韩杉特色的石晶 SPC 地板、墙板和踢脚线, 产品花色多达 200 多款, 被广泛应用到全国各大医院、学校、幼儿园、疗养院、药厂、实验室、展览馆、科技馆、图书馆等众多领域及海外市场。韩杉一贯秉承“用心创造”的企业精神, 以良好的市场信誉和可靠的产品质量赢得了国内外消费者的信赖。

公司自成立以来, 一直致力于不断开拓新市场, 积累行销经验, 目前在全国有多个办事处, 并设有专门的分销网点及大量的现货供应, 销售网络遍及全国多个省、市、自治区; 先后出口过加拿大、澳大利亚、德国、法国、英国、新加坡、马来西亚、越南、韩国等 30 多个国家和地区。

公司承诺, 以质量为保证, 以客户为中心, 为广大国内及海外客户提供最优质满意的产品和服务。韩杉地板, 用品质点亮生活。

Established in 2015, Hebei Hanshan New Decoration Materials Co., Ltd. is located in Zhengding, a famous historical and cultural city in Hebei Province of China. It is an enterprise integrating production, research and development, and sales of SPC flooring. Hanshan is one of the first domestic enterprises to make SPC flooring. At the end of 2019, Hanshan introduced cutting-edge production equipment with Germany technology. Following the international advanced concept of ground and wall integration, Hanshan has created the stone crystal SPC floor, wallboard and skirting line with special characteristics. There are over 200 new styles, which has been widely used in China and abroad. Hanshan SPC floors and walls have been used in hospitals, schools, kindergartens, nursing homes, pharmaceutical factories, laboratories, exhibition halls, science and technology museums, libraries and so on. Han Shan has always been adhering to the spirit of "creating with heart". It has won the trust of domestic and foreign consumers with its good market reputation and reliable product quality.

Over the years, Hanshan has successively obtained a number of utility model patents of SPC floors and its production equipment. What's more, Hanshan has got the credit of "Quality Trustworthy Product" in Hebei Province, "Key Recommended Product", "Quality Tracking Product", "Quality, Service, and Reputation AAA Enterprise", "National Key Recommended Honesty Operation Demonstration Unit". Hanshan Flooring put the product quality and service on the top most. All SPC floors are manufactured in accordance with international standards. Hanshan owns certifications under strict quality management system include GB/T19001-2016/ISO9001: 2015, CE, and FLOORSCORE certification.

Since its establishment, Hanshan has been committed to continuously exploring new markets and accumulating marketing experience. At present, Hanshan has multiple offices throughout China with dedicated distribution network. The sales network covers many provinces, cities, and autonomous regions across the country. Hanshan floors and walls have been exported to more than 30 countries and regions such as Canada, Australia, Germany, France, Britain, Singapore, Malaysia, Vietnam and South Korea.

Relying on superb technology, cutting-edge production equipment, advanced service concepts, and international development pace, Hanshan is determined to build a well-known enterprise with quality SPC floors to fit the needs of customers around the world. Hanshan floor, light up life with quality.



## 特性 FEATURES

材质 Material	全新料 VIRGIN RAW MATERIAL
厚度 Thickness	3.2-8.0mm
尺寸 Dimension	184*1220mm 151*920mm 313*620mm 230*1520mm Customized
耐磨层 Wear Layer	0.07-0.7mm
彩膜 Texture	木纹 Wood Grain 石纹 Stone 地毯纹 Carpet
压纹 Surface Types	平纹 Flat 深压纹 Embossed 冲击纹 Impact 手抓纹 Hand Scratch Pattern
底层 Underlayment	EVA IXPE

## 技术数据 TECHNICAL DATA

性能特点 PERFORMANCE	检测标准 TEST STANDARD	检测结果 TEST RESULT
室内空气证书 Indoor air certificates		M1, Floorcore, A+
防火性能 Fire resistance	EN13501-1	Bf1-s1
残余压痕 Residual indentation	EN ISO 24343-1	<0.2 mm (IXPE地垫) <0.2 mm (integrated IXPE damping)
尺寸稳定性 Dimensional stability	EN ISO 23999 (80°C /6h)	<0.1%
色牢度 Colour fastness	EN ISO 105-B02	≥6
防滑性 Slip resistance	EN13893 DIN 51130	D5(>0.3) R10
电气倾向 Electrical propensity	EN 1815	< 2 KV(antistatic)
抗耐磨抗刮痕性 Wear and Scratch resistance	EN 16094	以好的标准通过 Pass with good results
抗化学腐蚀性 Chemical resistance	EN ISO 26987	以好的标准通过 Pass with good results
抗热阻性 Thermal resistance	EN 12664:2001	0.035m² K/W
轮脚适用度 Effect of castor chair	EN 425	适合 Suitable
地板采暖 Underfloor heating		可以 (最高27°C) Ok (max +27°C)
细菌滋生 Bacterial growth		不作为地板 Does not act as substrate
撞击声消音性 Impact sound reduction		Ln =20 dB(集成IXPE地垫) Ln =20 dB(integrated IXPE damping)

## SPC 地板介绍

SPC 地板是一种新型地板材料，具有防水防潮、刚性和尺寸稳定等优点。同时，环保，超强防滑，抗菌防霉，温暖舒适，清洁简单，超轻超薄，超强耐磨，防火阻燃，吸音降噪，高弹安全，美观时尚，拼装简单，保养简单。目前，SPC 广泛应用于多场景室内铺装，包括家居，办公场所，学校，医院，商超，体育馆，宾馆，会所等等。

作为挤压芯材，SPC 芯材是由碳酸钙、聚氯乙烯和稳定剂组成的复合材料。挤出后将耐磨层和彩膜压在 SPC 芯上。UV 层保护彩膜不褪色，增强表面光滑度，有效保护地板表面。底层的回弹力，有如多一层守护力增强地板的稳定性与舒适性。

## SPC Flooring

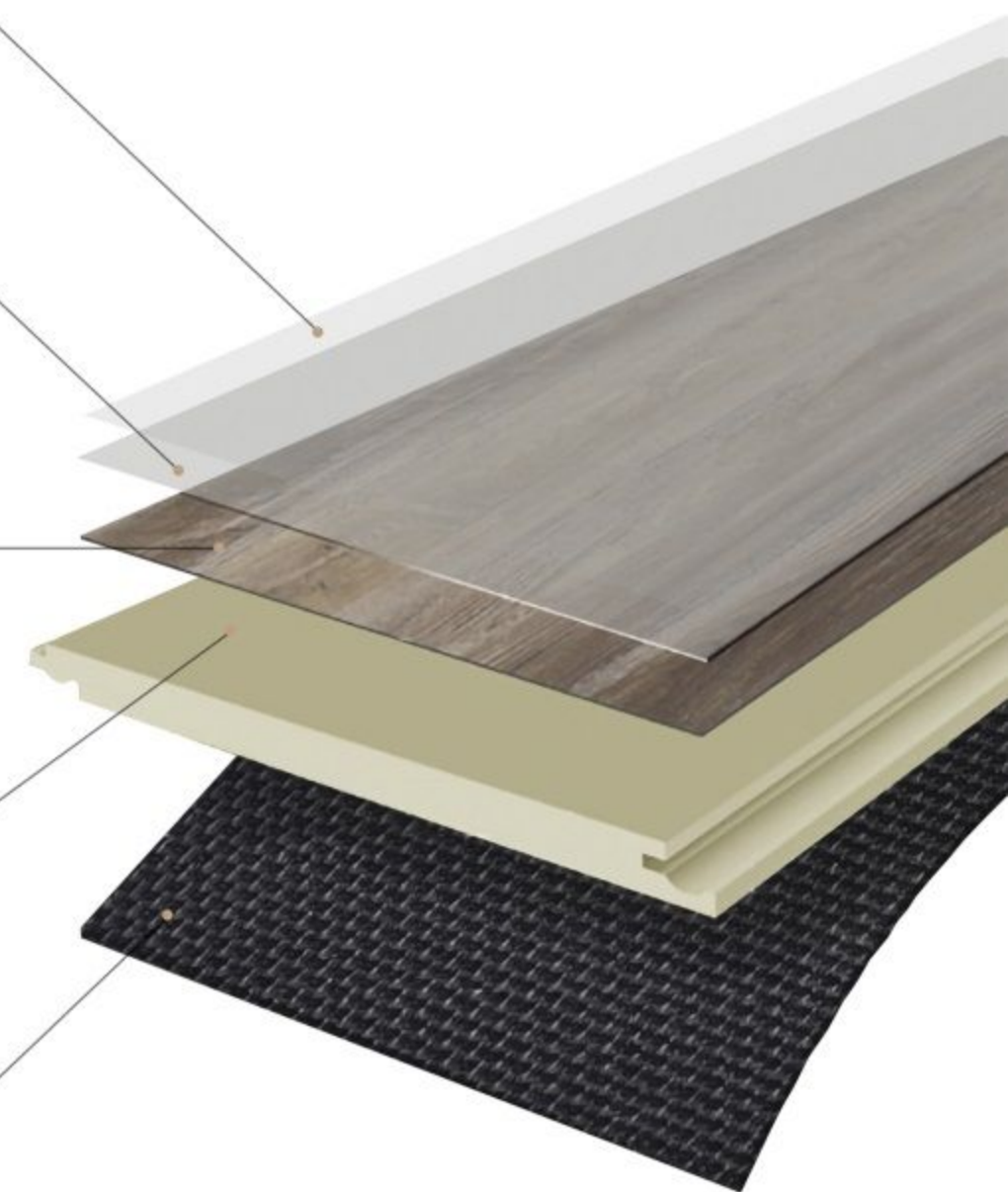
SPC flooring is a new flooring material, with the features of being waterproof, rigid and dimensionally stable. What's more, it is eco friendly, anti-slip, anti-bacteria, easy cleaning, stain resistance, warm underfoot, light and thin, wear resistant, sound insulation, full of beauty and fashion, comfortable and safe, easy installation, easy maintenance. Until now, it has been widely used and suitable for multi scene indoor pavement including home, office, school, hospitals, shopping mall, supermarket, gym, hotel, club and so on.

As a extruded core material, the SPC core is a composite material made of calcium carbonate, polyvinyl chloride and stabilizer. The wear layer and color films are pressed on the SPC core after the extruding. The UV layer plays an important role on protecting the color film from fading, enhancing the surface smoothness. The resilience of the underlayer is like a layer of protection to enhance the stability and comfort of the floor.

## STRUTURE OF SPC FLOOR

### SPC地板产品结构

- UV层 UV layer**  
保护彩膜永不褪色，抗污、防水、防滑、增强表面光滑度有效保护地板表面。  
Anti-aging, combat discoloration from the sun  
Stain resistant,  
Easy to clean.
- 耐磨层 (0.07-0.7mm) Wear resistant layer**  
通透耐磨，保护花色不被磨损，延长使用年限。  
Wear resistant,  
Decoration layer protection,  
Fire retardant.
- 彩膜层 (0.07mm) Decoration layer**  
木纹/石纹/地毯纹可选 Wood/stone/carpet options  
款式多样 Varia colors available  
设计独特 Excludeside design
- SPC基层 (3.2-8mm) SPC Core**  
具有优异的弹性和抗拉强度，防水性能有效抵抗变形，让地板更耐用。  
100% waterproof  
Durability,  
stability and rigidity
- 可选附加层 (1.0-2.0) Optional backing layer**  
多一层守护力增强地板稳定性与舒适性。  
IXPE / EVA options  
Sound insulation  
Moisture resistance







**木纹系列** 经典木纹花色  
WOOD GRAIN SERIES Classic wood grain Decor

**锁扣拼装 美观时尚**  
CLICK INSTALLATION, FULL OF BEAUTY AND FASHION

韩杉地板采用欧洲先进锁扣工艺，  
拼装完全无缝，  
不留死角，这是普通地板无法做到的。  
SPC地板将地面的整体视觉效果达到最大限度的优化。

Hanshan floor adopts  
European advanced click technology.  
The installation is completely seamless,  
leaving no dead corners.  
It is almost impossible for ordinary floorings.  
The SPC floor maximizes  
the overall visual effect of the ground.



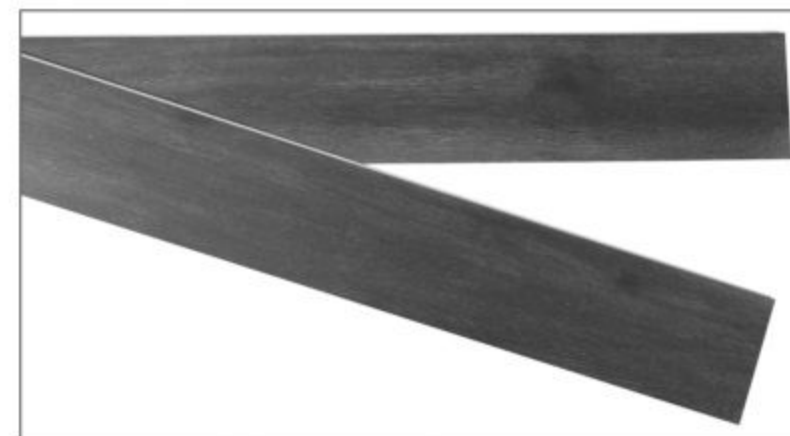
HS-1701



HS-1702



HS-1704



HS-1705



HS-1706



HS-1707



HS-1708



HS-1710



HS-1712





HS-1716



HS-1717



HS-1718



HS-1750



HS-1751



HS-1752



HS-1753



HS-1754



HS-1755



GREEN  
SOURCING FROM NATURE  
绿色源于自然



HS-1756



HS-1780



HS-1782



HS-1785



HS-1788



HS-1789





HS-1901



HS-1904



HS-1905



HS-1906



HS-1907



HS-1909



HS-1913



HS-1916



HS-1918





HS-1960



HS-1961



HS-1963



HS-1966



HS-1968



HS-1969-36



HS-1969-51



HS-1972



HS-1973



HS-1974



HS-1976



HS-1977



HS-1979



HS-1980



HS-1981 (1090-21)



HS-1984 (0004-1)



HS-1985 (6135-2)



HS-1989





把流行工艺元素与流行时尚完美对接,突出设计理念和装饰效果,做工精良,充满品位与质感。  
Perfect connection between popular craft elements and popular fashion,  
Outstanding design concept and decorative effect, excellent workmanship, Full of taste and texture.



HS-9901



HS-9903



HS-9904



HS-9905



HS-9907



HS-9909



HS-9911



HS-9912



HS-9913





HS-2155



HS-2156



HS-2157



HS-2158



HS-2160



HS-2166



HS-2171



HS-2172



HS-2173

**告别早晨冰冷的硬地板**

在卧室安装 SPC 地板有助于保持地板温度, 即使在下雨天也不会变冷。与陶瓷地板的坚硬表面不同, SPC 地板更柔软, 赤脚行走时更加舒适。

**隔音**

SPC 地板的隔音降噪性能绝对有助于确保您整夜安眠, 特别是对于有婴儿、老人或失眠症的家庭。

**赏心悦目**

SPC 地板有多种款式、设计和颜色。可以用天然石头的不同色调和纹理进行印刷, 使其用途广泛, 可以轻松与您房间的任何喜欢的风格或设计相匹配。不仅可以美化您的整个房间, 还可以作为整体美感的增强剂!

**Say Goodbye To Cold Hard Floor In The Morning**

Stepping on cold floor the moment you get up can be harsh. It's time to put an end to the way you kickstart your morning. Installing SPC flooring in your bedroom can help maintain floor temperature so it does not get cold even during rainy days. Another plus point of SPC flooring is the underfoot comfort when stepping on it. Unlike the hard surface of ceramic floor, SPC flooring is softer and provide extra comfort when walking in barefoot.

**Sound Insulation**

This particular properties of SPC flooring is definitely a great help to ensure you a peaceful sleep all night long especially for household with infant, elderly members or person suffer from insomnia.

**Pleasant in the eye**

SPC flooring comes with a wide variety of styles, designs and colors. It can even be printed in different tones of stones which makes it versatile to match easily with any preferred style or design of your room. The different texture and tones of SPC flooring not only beautify your entire room but also act as an overall aesthetic enhancer!







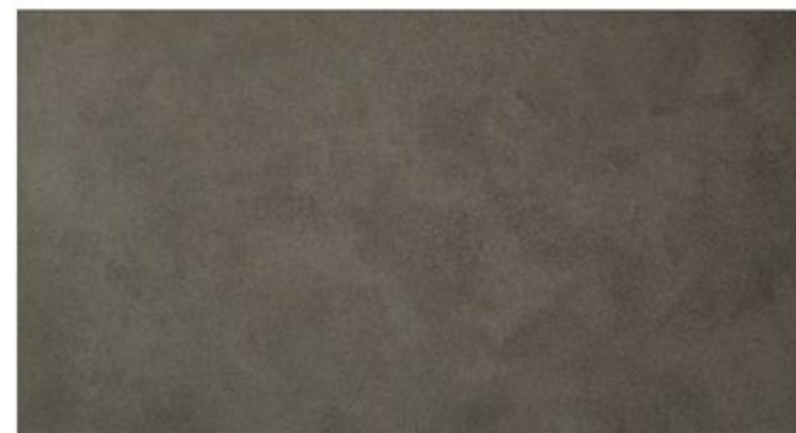
HS-9005



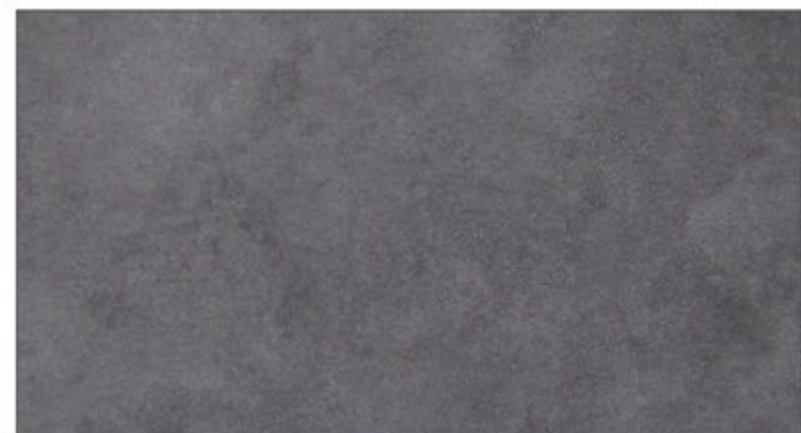
HS-9006



HS-9007



HS-9008-B



HS-9008-24



HS-9009-1



HS-9009-4



HS-9010-08



HS-9015



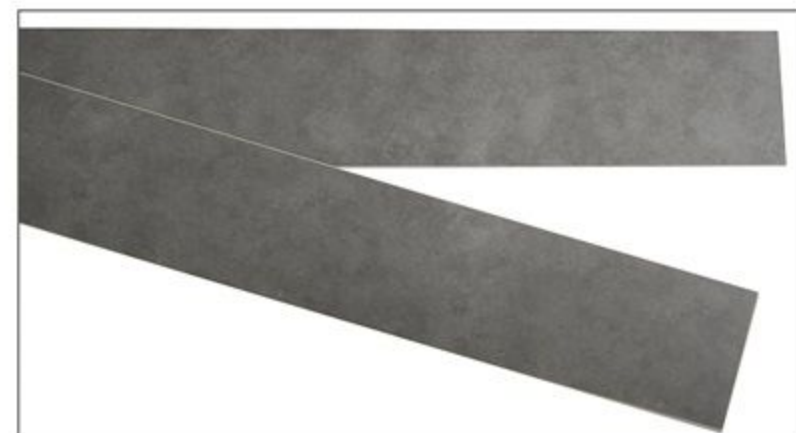
HS-9016



HS-9021



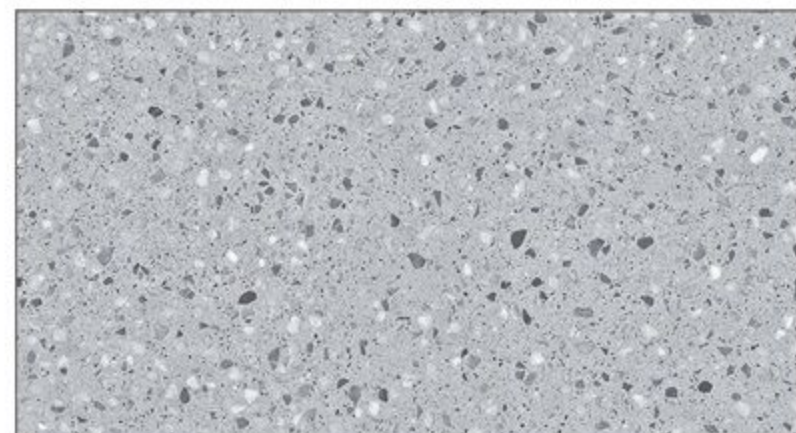
HS-9022



HS-9023



HS-9024



HS-9025



HS-9026



HS-9027



HS-9028

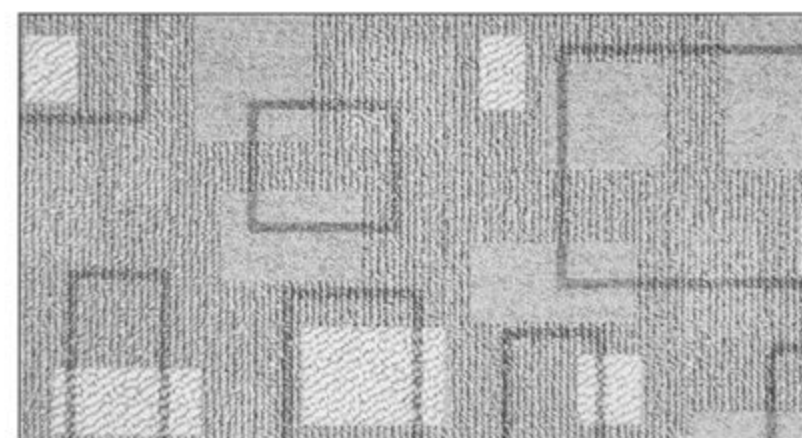




HS-2001



HS-2002



HS-2003



HS-2004



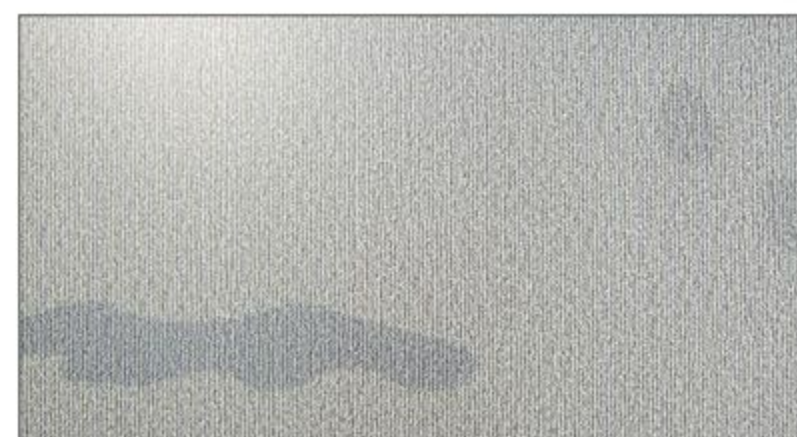
HS-2005



HS-2006



HS-2007



HS-2008



HS-2009



SPC地板与传统地面材料优劣对比

地板类型 Flooring type	优点 Advantages	缺点 Disadvantage
复合地板 Laminated flooring	天然材料；安装施工对地平整要求低；不易被烟蒂灼坏 Natural material; Price lower than other flooring installation; Not easily be damage by cigarette.	一旦损坏，无法修补；油漆使地面易滑；潮气使材料膨胀； 无吸音功能；适合家居而不适合商业用途 Once damaged, it cannot be repaired; Paint makes the ground slippery; Moisture expands the material; No sound absorption function; Suitable for home rather than commercial use
瓷砖 Ceramic	不易损坏；易维护；颜色、设计多样；成本低 Good abrasion resistance; Easy maintenance; Flexible on designs and colors Raw material cost low	难以切割和造型；自重大；无吸音功能；易随基层移动；易破碎；潮湿时易滑倒； 导热性差；易失去热量；翻新改造时铺设困难 Difficult to cut and shape; Self significant; No sound absorption function; Easy to move with the base; Fragile; Easy to slip when wet; Poor thermal conductivity; Easy to lose heat; Difficult laying during renovation
花岗岩 Granite	天然材料；不易磨损；无需经常维护 Natural material; Good abrasion resistance; Few times maintenance require.	难以切割和造型；设计选择少；自重大；导热性差；易失去热量； 易滑倒；易破碎；翻新改造时铺设困难 Difficult to cut and shape; Few design options; Self significant; Poor thermal conductivity; Easy to lose heat; Easy to slip; Fragile; Difficult laying during renovation
大理石 Marble	天然材料；不易磨损 Natural material; Good abrasion resistance;	易刮伤和污渍；需定期维护；无吸音功能；铺设工艺复杂；价格昂贵；同其他地板连接问题多； 潮湿时易滑倒；颜色不易匹配；翻新改造困难；难于控制材料质量；基层不平整容易破碎 Easy to scratch and stain; Regular maintenance is required; No sound absorption function; The laying process is complex; Expensive; There are many problems in connection with other floors; Easy to slip when wet; The color is not easy to match; Difficulties in renovation; Difficult to control material quality; The base course is uneven and easy to break
地毯 Carpet	隔音效果好；感觉柔软舒适；对地平整要求不高；铺设简单； 设计方案和色彩选择性强；价格选择范围大 Good sound-absorption; Soft and comfortable; Low requirement for floor flatness; Easy installation; Wide range of design options and color selections; Large price range for option.	易污渍；难于清洁不适合灰尘多的环境；易燃； 细小尘土和细菌聚集易导致皮肤过敏 Easy to stain; Difficult to clean, not suitable for dusty environment; Flammable; Fine dust and bacteria can easily lead to skin allergy
实木地板 Solid wood flooring	天然材料；损坏后可以重新磨光；相对容易维护 Natural material; Easy reconditioning by re-polishing; Comparatively easy no maintenance.	铺设困难；安装成本高；不适合重型物体；价格昂贵；随材料来源不同而无法保证质量； 易产生凹痕；易燃；无吸音功能；易滋生白蚁；易受温度和湿度的影响（收缩和扭曲） Difficult laying; High installation cost; Not suitable for heavy objects; Expensive; Quality cannot be guaranteed due to different material sources; Easy to produce dents; Flammable; No sound absorption function; Easy to breed termites; Susceptible to temperature and humidity (shrinkage and distortion)
SPC石塑地板 SPC flooring	环保，超强防滑，抗菌防霉，温暖舒适，清洁简单， 超轻超薄，防水防潮，超强耐磨，防火阻燃，吸音降噪， 高弹安全，美观时尚，拼装简单，保养简单。 eco friendly, anti-slip, anti-bacteria, easy cleaning, stain resistace, water-proof, warm underfoot, light and thin, wear resistant, sound insulation, beauty and fashion, comfortable and safe, easy installation, easy maintenance.	产品生产工艺要求高，产品安装工序严格 The product has high production process requirements and strict product installation procedures

SPC地板产品优势

SPC锁扣地板使用全新料与回收料、混合料的区别 Identification of SPC flooring made of virgin raw material, recycled material and mixture material			
鉴别对比方法 Identification	全新料 Virgin Raw Material	回收料 Recycled	混合料 Mixed Material
看颜色 Color	SPC的基材是PVC树脂。使用全新料的颜色为米色 The core of SPC is PVC resin. The one made of virgin raw material is beige.	灰黑色或黑色 Colors: Gray or black	灰色、青色和白色 Colors: Gray, Cyan or white
看外观 Surface	表面平整，无明显污渍，花纹清晰 The surface is flat, no obvious stains. The pattern is clear.	外观不够光滑，连接后的平整度和配合度也较差。 The surface is not smooth enough with poor flatness.	
摸手感 Touch feeling	手感细腻湿润 Delicate	手感是干燥和无水的 Dry	
透光性 Light transmission	手电筒贴着地板照射，全新料SPC锁扣地板有良好透光性 Under flashlights test, obvious light transmission	手电筒贴着地板照射，混合料及回收料不透光或者透光性很差。 Under flashlights test, poor or no light transmission.	
掰锁扣 Locking part	找一块样品，掰地板的锁扣部分， 优质SPC锁扣地板的锁扣具有良好的柔韧性，不容易掰断。 locking floor latch has good flexibility, not easy to break.	质量差的很脆，非常容易折断。 Materials brittle, much easy to break.	
看厚度 Thickness	实地测量地板厚度。如果实测大于等于标注厚度，产品是全新料的。 Measure the thickness of the sample, the value is equal or higher than the standard level.	如果实测小于90%，就可能是回收料或混合料。 Measure the thickness of the sample, the value is lower than the standard level.	
抗剥离性 Anti-stripping	折断地板后，用力拉扯，看表面彩膜层、耐磨层和UV层等是否与基材之间不容易分开，不容易分开的才是优质的全新料SPC锁扣地板 Breaking the sample and pulling it apart, the color film, wear layer, UV layer and the core not easy to separate	表面彩膜层、耐磨层和UV层等与基材之间容易分开 Breaking the sample and pulling it apart, the color film, wear layer, UV layer and the core is easy to separate	
提示 Note	目前质量最高的是采用全新料生产，性能稳定，生产成本低。 Quality SPC floor is made of virgin raw material with stable performance and features.		



# FORMALDEHYDE TEST REPORT

## 环保/质量检测报告

韩杉独有净甲技术，除杂抑菌，全屋净化，健康全家，有报告，更安心！

Hanshan's unique formaldehyde purification technology, Remove impurities and bacteriostasis, purify the whole house, and keep the whole family healthy, It's more reassuring to have a report!



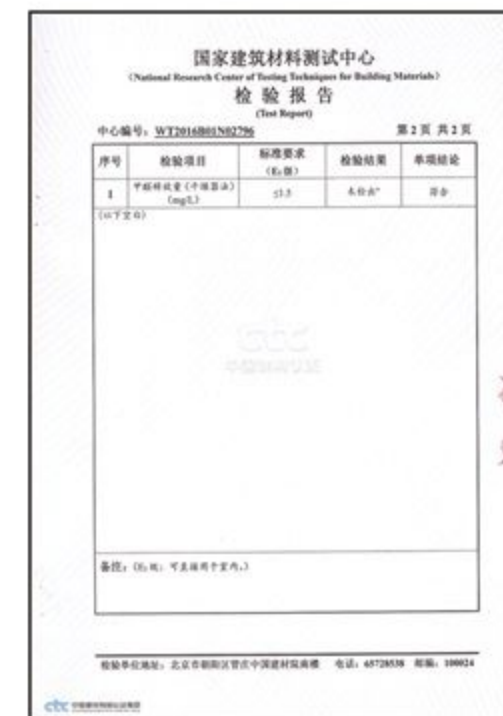
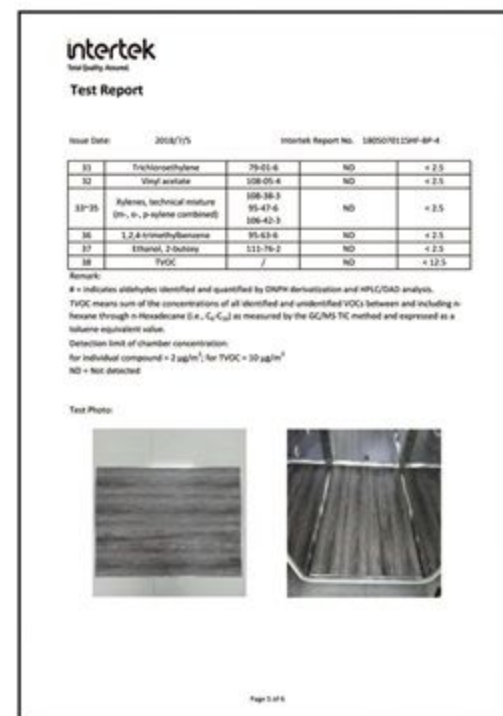
SPC地板性能测试报告 Performance testing SPC Flooring  
挥发性有机化合物含量分析 Volatile organic compounds content analysis

国家建筑材料测试中心经检验，送检样品所检全部项目（聚乙烯单体，可溶性重金属，挥发物）的检验结果符合GB18586-2001

floorscore认证



自然·健康·0甲醛  
NATURAL · HEALTH  
0 FORMALDEHYDE



所有目标VOC的13天室内浓度和排放因子测试结果达标  
Test result of 13 days chamber concentration and emission factor of all target VOCs

甲醛释放量检测报告 Formaldehyde emission test report

质量管理体系认证证书 Quality management system certificate





## FIRE DETECTION REPORT

### 防火检测报告

B1 级防火认证, 有效防火阻燃, 不怕烟火更安全。

Class B1 fire protection certification, effective fire protection and flame retardancy, Not afraid of fireworks is safer.



燃烧性能检测报告 Combustion performance test report



燃烧性能检测报告 Combustion performance test report



## THE ADVANTAGE OF HANSHAN SPC FLOORING

### SPC地板产品优势



**全新料·环保智造**  
VIRGIN RAW MATERIAL, ECO FRIENDLY

韩杉地板采用高品质的聚氯乙烯树脂, 环保, 无毒, 可再生。100% 不含甲醛, 苯, 不含重金属及其他致癌物, 无可溶性挥发物, 无辐射。HANSHAN floor is made of high-quality polyvinyl chloride resin, eco friendly, non-toxic and renewable. Formaldehyde free, benzene free, no heavy metals and other carcinogens. No soluble volatile matter, no radiation.



**超强防滑**  
SUPERIOR ANTI-SLIPING

韩杉地板采用高品质耐磨层, 具备特殊防滑性能。在沾水情况下, 脚感更涩, 不容易滑倒。在安全要求较高的公共场所, 如飞机场, 医院, 学校等, 都是首选的地面装饰材料。With superfine wear resistance layer, Hanshan floor is with special anti-sliping features. In the case of water on the floor, it is not easy to slip. In public places with high safety requirements, such as airports, hospitals, schools, etc., SPC flooring is the preferred choice.



**抗污·抗菌·防霉**  
STAIN RESISTANCE, ANTI-MILDEW, ANTI-BACTERIAL

韩杉地板表面经过特殊抗菌, 抗污处理, 抑制细菌繁殖。残留在 SPC 地板上的溢物、油脂或液体可以轻松擦掉, 而不会弄脏地板。The surface of Hanshan floor undergoes special anti-bacterial and anti-fouling treatment to inhibit bacterial growth. Spillage, grease or liquid left on SPC flooring can be wiped off easily without staining the floor.



**温暖舒适**  
WARM AND COMFORTABLE

韩杉地板柔软, 富有弹性。导热性能良好, 散热均匀。光脚行走感觉温暖如春, 舒适亲切, 克服了传统石材, 瓷砖, 水磨石等冰冷, 滑的缺陷, 是地暖导热地板的首选。适合家庭铺装。Barefoot walking brings the warm and comfort of spring. Hanshan floor is soft and flexible, featuring with good thermal conductivity and uniform heat dissipation. Overcoming the defects of ice, cold and slippery on the traditional stone, ceramic tiles, terrazzo, Hanshan SPC floor is the first choice for underfloor heating and thermal conductive flooring. It is suitable for family paving.



## THE ADVANTAGE OF HANSHAN SPC FLOORING

### SPC地板产品优势



#### 超轻超薄

ULTRA-LIGHT AND ULTRA-THIN

韩杉地板厚度 3.2-6mm, 每平米重量仅 5-15kgs, 不足普通地面材料的 10%。在高层建筑中, 对楼体承重和空间节约, 有着无可比拟的优势, 同时, 在旧楼改造中有着特殊的优势。

The thickness of Hanshan floor is 3.2-6mm, and the weight per square meter is only 5-15kgs, which is less than 10% of ordinary floor materials. In high-rise buildings, it has incomparable advantages for the load-bearing and space saving of buildings.

At the same time, it has special advantages in the renovation of old buildings.



#### 防水防潮

WATERPROOF AND DAMPPROOF

韩杉地板主要成分是聚氯乙烯树脂, 和水无亲和力, 防水防潮, 不会因为湿度大而发生霉变。

The main component of Hanshan flooring is polyvinyl chloride resin, which has no affinity with water.

It is waterproof and dampproof. There will not be mildewed due to high humidity.



#### 超强耐磨

SUPER WEAR RESISTANT

韩杉地板表面具备特殊加工的透明耐磨层, 其耐磨转数可达 10000 转。

根据厚度和使用环境的不同, 正常情况下, 韩杉 SPC 地板可使用 10-30 年。

The surface of Hanshan floor is equipped with a specially processed transparent wear-resistant layer, which can reach up to 10,000 turns.

Depending on the thickness and usage environment, under normal circumstances, Hanshan SPC floor can be used for 10-30 years.



#### 防火阻燃

FIRE AND FLAME RETARDANT

环保型 SPC 点的防火等级为 Bf1 级, 仅次于石材。阻燃, 不自燃, 离开火焰 5 秒内自动熄灭, 不会生产有毒有害气体。

The fire rating points of SPC floor is Bf1, which is only second to stone.

It is flame-retardant, non-spontaneous. SPC floor extinguishes automatically within 5 seconds after leaving the flame.

It does not produce toxic and harmful gases.

## THE ADVANTAGE OF HANSHAN SPC FLOORING

### SPC地板产品优势



#### 吸音防噪

SOUNDPROOF

指定功能的 SPC 地板具有一定的隔音性能。由于这种特殊类型的 SPC 地板能够吸收和隔离噪音, 因此可以降低来自周围社区的沉重脚步声和噪音。

SPC flooring with designated function comes with a certain level of soundproof properties.

Sound of heavy footsteps and noises from surrounding neighbourhood can be tuned down as this special type of SPC flooring is able to absorb and insulate noises.



#### 高弹安全

HIGH ELASTIC AND SAFETY

韩杉地板质地较软, 弹性好。在重物的冲击下有着良好的弹性恢复能力。脚感舒适, 被称为“地板软黄金”。

高品质的 SPC 地板能最大限度的降低地面对人体的伤害, 分散对足部的冲击。

Hanshan flooring has soft texture and good elasticity. It has good elastic recovery ability under the impact of heavy objects.

The foot feels comfortable and is called "soft gold on the floor".

The high-quality SPC floor can minimize the damage of the ground to the human body and disperse the impact on the feet.



#### 快速安装

FAST INSTALLATION

SPC 地板, 快速安装, 如您所愿。无需拆除整个区域的地板, 即可在几分钟内更换特定的 SPC 地板。从长远来看, 更换特定的 SPC 地板相对更节省成本。

The click system of SPC floor can realize fast installation of your imagination.

The replacement of that particular SPC floor piece can be done within minutes without having to dismantle flooring for the whole area.

Replacing particular SPC floor piece is relatively more cost saving in the long run.



#### 环保可再生

ECO FRIENDLY AND RECYCLABLE

韩杉地板是可回收利用的地面装饰材料, 对于保护我们的地球自然资源和生态环境具有巨大的意义。

Hanshan floor is a recyclable floor decoration material, which is of great significance for protecting our earth's natural resources and ecological environment.



## SPC FLOOR PRODUCTION PROCESS

SPC地板制作流程

CREATE QUALITY WITH INGENUITY

# 用匠心·致品质

引进德国工艺，每块地板都要经受住多道工序的精雕细琢，无醛智造，演绎品质！



混料  
Raw materia mixing



挤出  
Extruding



UV处理  
UV coating



分切  
Cutting



开槽  
Slotting



质检  
Quality testing



包装  
Packaging

## HANSHAN SPC FLOOR SIXTEEN TECHNOLOGY PATENTS

韩杉SPC地板16大技术专利

科技·创新  
TECHNOLOGICAL INNOVATION

16项  
技术专利  
16 TECHNOLOGY PATENTS

<p>实用新型专利证书 石塑SPC地板 SPC floor</p>	<p>实用新型专利证书 SPC生产设备 SPC floor production equipment</p>	<p>实用新型专利证书 地板 SPC floor</p>	<p>实用新型专利证书 SPC复合地板 a stone and plastic floor</p>
<p>实用新型专利证书 用于SPC地板原料加工的混料装置 a mixture device for the processing of the raw material of SPC floor</p>	<p>实用新型专利证书 SPC地板生产用间隔翻板装置 an interval piracy device for SPC floor manufacturing</p>	<p>实用新型专利证书 SPC地板生产线除尘装置 Dust removal device of SPC floor production line</p>	<p>实用新型专利证书 SPC地板切割固定装置 Cutting fixture of SPC floor production line</p>



## SPC FLOOR ENGINEERING CASE

SPC地板工程案例



**HS-9909**

2020年4月  
包头市  
佳雨幼儿园  
APRIL 2020  
BAOTOU CITY  
JIAYU KINDERGARTEN



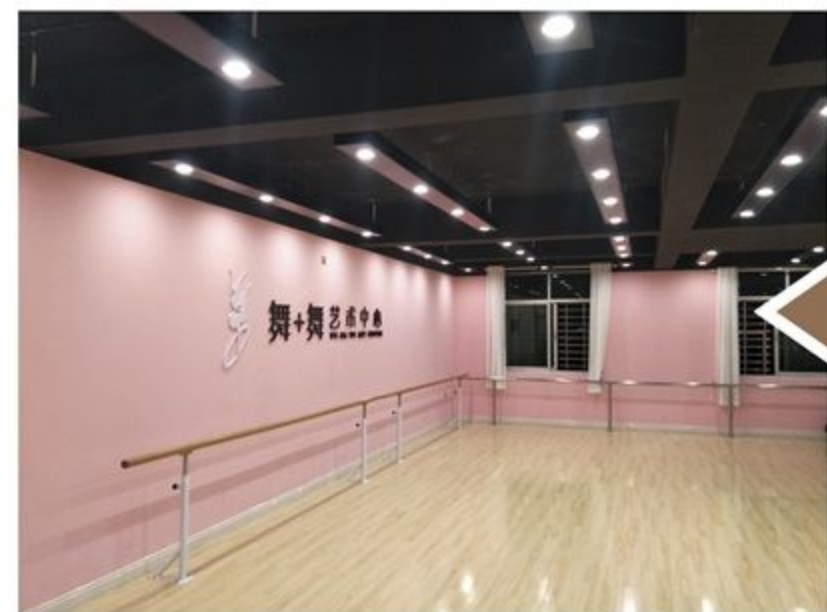
**HS-1969-51**

游乐园  
AMUSEMENT  
PARK



**HS-9005**

2018年6月  
内蒙五星宾馆  
JUNE 2018  
NEIMENG  
FIVE STAR HOTEL



**HS-1756**

2019年4月  
兰州舞蹈室  
APRIL 2019  
LANZHOU  
DANCE STUDIO



**HS-1701**

2019年6月  
山西消防支队  
JUNE 2019  
SHANXI FIRE BRIGADE



**HS-9901**

2017年10月  
山西传统小酒馆  
OCTOBER 2017  
SHANXI  
TRADITIONAL TAVERN



**HS-9026**

2018年10月  
河北渤海银行支行  
OCTOBER 2018  
HEBEI BOHAI  
BANK SUB BRANCH



**HS-1702**

2018年4月  
中国乒乓球  
训练基地  
APRIL 2018  
CHINESE TABLE TENNIS  
TRAINING BASE



SPC FLOOR ENGINEERING CASE

SPC地板工程案例



**HS-1918**

2017年1月  
河北省级医院

JANUARY 2017  
HEBEI  
PROVINCIAL HOSPITAL



**HS-1755**

2018年10月  
健康养老服务中心

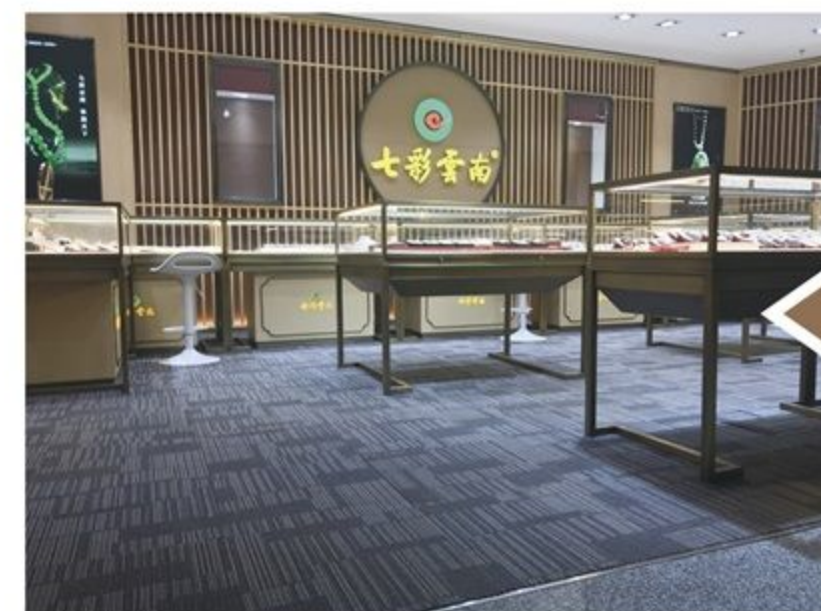
OCTOBER 2018  
HEALTH AND ELDERLY  
CARE SERVICE CENTER



**HS-9006**

2016年10月  
河北传媒大厦

OCTOBER 2016  
HEBEI  
MEDIA BUILDING



**HS-9003**

珠宝店

JEWELRY STORE



**HS-1969-36**

2016年4月  
山东新华书店

APRIL 2016  
SHANDONG  
XINHUA BOOKSTORE



**HS-1907**

2017年7月  
山西中学

JULY 2017  
SHANXI  
MIDDLE SCHOOL



**HS-1977**

2019年3月  
河北华为  
手机营业厅

APRIL 2018  
CHINESE HUAWEI  
TRAINING BASE



**HS-1717**

全屋通铺

...  
FULL HOUSE SHOP  
...



## SPC FLOOR SALES NETWORK

SPC地板销售网络



WE PROVIDE THE BEST SPC FLOOR THAT FIT YOUR NEEDS.

## SPC FLOOR INSTALLATION STEPS

SPC地板安装步骤

### 施工要求 CONSTRUCTION REQUIREMENTS

- ※清除地面污垢、沙尘、油渍及化学物质等,确保地面的干燥、固化、平坦和清洁。
- ※地面平整度在 2 米范围高低落差应 $\leq 3\text{mm}$ 。
- ※ remove dirt, dust, oil stains and chemicals on the ground to ensure that the ground is dry, solidified, flat and clean.
- ※ the ground flatness shall be within 2m, and the height drop shall be  $\leq 3\text{mm}$ .

### 铺装方法 PAVING METHOD

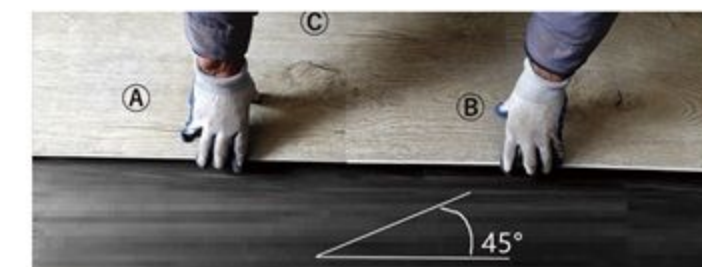
- ※直接在平整无渗水的硬层地面进行铺装。
- ※在客厅、卧室、书房、厨房等无水区,可免胶安装;在卫生间等沾水区建议施胶安装。
- ※ pave directly on the flat hard layer ground without water seepage.
- ※ glue free installation is available in the living room, bedroom, study, kitchen and other water free areas; It is recommended to install glue in water stained areas such as toilets.



- 01 将 B 板凸倾斜嵌入 A 板凹槽内,锁紧放平。  
The B plate tenon plate A inclined in the fillster locking, and then put it flat.



- 02 放平后 B 板与 C 板的间距约 2-3 毫米成平行线。  
After put it flat, the B plate and C plate spacing about 2-3mm, into parallel lines.



- 03 将 A 板与 B 板同时提起(与地面约成 45 度角)。  
Lift up the plates A and B at the same time (note: with the ground at a 45 degree angle).



- 04 将 B 板面朝 C 板方向平推,直至锁紧。  
The B plate along C plate direction, flat push until locked.



- 05 用手掌将 A 板和 B 板向下压平,勿使蛮力硬压地板。  
With the palm of your hands, flatten the plates A and B, but do not force to press to the floor.



- 06 拼装完成后,地板平整,且无缝隙。如果地板不平整或有缝隙,需要轻轻的提起 10-30° 角度锁紧,紧扣后地板会自动平整。  
The floors are smooth without slit after installation. If the floor are not smooth or have slit, they need to be lifted and lockde by 10-30 degree angle. After locking, floor would be smooth automatically.